

**JOHNS CREEK HIGH SCHOOL
ORCHESTRA
2015 – 2016**

HANDBOOK



Young K. Kim
Orchestra Director
Orchestra Office: (770) 623-2138 ext. 183
Email: ykkimy@gmail.com

Room Number: #287 (Orchestra Room)

ORCHESTRA WEBSITE:
www.johnscreekorchestra.com

Johns Creek High School Victory Oath:

*"We, the students of Johns Creek High School, vow to uphold our core values of **Integrity** first, **Service** before self, and **Excellence** in all we do by setting the example for all who follow"*

TABLE OF CONTENTS

Schedule of Orchestra Activities	3
General Information	
Purpose	4
GPS/NAfME Standards	4
Description of Orchestra Classes	4-5
Additional Ensembles	5
Method Books/Course Materials	5
Daily Required Materials	6
Concert Attire	6
Grading and Discipline	
Grading Scale	6
Recovery Policy	6
Honor Code/Integrity	6
Advanced Orchestras	7
Testing	7
Homework	7
Attendance Policies for Performances and Rehearsals	7
Dismissal	8
Trip-related Information	8
Classroom Rules and Procedures	
Tardiness	8
Classroom Participation	8
Individual Progress	
Chair Assignment	9
Auditions for Advanced Orchestras	9
Challenges	9
Private Lessons/Private Teacher List	9-10
Facility and Equipment	
Director's Office	11
Rehearsal Rooms	11
Computer/TV/Technology Usage	11
Instrument Storage	11
Library	11
Lost Music Fines	11
GMEA All-State Orchestra Audition Information	12-13
Miscellaneous Information	
Concession Stands – Stadium	14
Instrumental Music and Athletics	14
Scheduling of Classes	14
Parent Conferences	14
Johns Creek High School Orchestra Website	14
Merit System	14
Merit Accumulation Form	15
Johns Creek High School Orchestra Leadership	
JCHS Orchestra Student Leadership Team Chart/List	16
Orchestra Officer Duties and Responsibilities	17
JCHS Orchestra Boosters Association	18
Johns Creek High School Administration	18

Johns Creek High School Orchestra

SCHEDULE OF ORCHESTRA ACTIVITIES (2015 – 2016)

DATE	TIME	EVENT	Event Site
8/18/15	6:30pm	Annual Orchestra Potluck Dinner	JCHS Cafeteria
8/19 - 8/21/15	TBD	Seating Auditions for Orchestra	Johns Creek HS
9/4/15	N/A	Application Deadline for Solo & Ensemble Festival	N/A
9/4/15	N/A	Application Deadline for All-State Orchestra	N/A
September	TBA	Orchestra Family Picnic	TBD
September	TBA	Early Fall Orchestra Fundraiser	Johns Creek HS
October	TBA	Orchestra Trip Fundraiser	Johns Creek HS
10/1/15	** 7:00pm	Johns Creek HS Orchestra "Fall" Concert	JCHS Auditorium
10/7/15	TBA	GSU High School Orchestra Invitational	Georgia State University
10/17/15	TBA	All-State Orchestra 1st Round Auditions	Centennial High School
October	TBD	Orchestra (Individual) Picture Day - during class	Johns Creek HS
11/20/15	7:00pm	JCHS "Winter" Student Recital	JCHS Auditorium
11/2/15	TBD	Fulton Co. HS Honor Orchestra Auditions	Centennial High School
11/16-11/17/15	TBA	Fulton Co. HS Honor Orchestra Event	Centennial High School
11/14/15	TBA	GMEA Solo & Ensemble Festival	Sutton Middle School
12/3/15	** 7:00pm	Johns Creek HS Orchestra "Winter" Concert	JCHS Auditorium
1/9/16	TBA	GMEA All-State Orchestra Final Round Auditions	Westminster Schools
2/8/16	** 7:00pm	Orchestra Pre-Festival Performance	JCHS Auditorium
2/17 - 2/19/16	** TBA	GMEA District V Orchestra LGPE	Alpharetta High School
3/3 - 3/5/16	TBA	GMEA High School All-State Orchestra Event	Athens, Georgia
3/31 - 4/4/16	TBD	Spring Trip/Performance (Tentative)	TBD
4/15/16	7:00pm	JCHS "Spring" Student Recital	JCHS Orchestra Room
April	TBD	Orchestra Auditions for Next Year	Orchestra Room
4/26/16	** 7:00pm	Johns Creek HS Orchestra "Spring" Concert	JCHS Auditorium
TBD	** 7:00pm	Johns Creek - Cluster Orchestra Concert	TBD
TBD	N/A	Selection of Orchestra Officers for 2016-2017	N/A
5/13/16	7:00pm	Annual "Orchestra Awards Banquet"	JCHS Cafeteria
5/22/16	6:00pm	JCHS Chamber Strings Performance at Baccalaureate	TBD
5/26/16	** TBD	JCHS Graduation Ceremony Performance	TBD

** Mandatory event for Orchestra members as part of course requirement

GENERAL INFORMATION

Purpose

Our Orchestra's purpose is to:

- Serve the school and community through quality concert performances
- Furnish members with an invaluable experience in music as an art form.
- Develop individual responsibility and self-discipline.
- Further school spirit.
- Encourage and develop leadership and teamwork.



Goals and Objectives in line with NAFME/GPS Standards

1. Singing alone and with others, a varied repertoire of music
2. Performing on instruments, alone and with others, a varied repertoire of music
3. Improvising melodies, variations, and accompaniments
4. Composing and arranging music within specified guidelines
5. Reading and notating music
6. Listening to, analyzing, and describing music
7. Evaluating music and music performances
8. Understanding relationships between music, the other arts, and disciplines outside the arts
9. Understanding music in relation to history and culture



Description of Orchestra Classes:

The Johns Creek High School "Chamber Orchestra" is the most challenging orchestra class comprised mostly of upper level students. The students are selected through auditions and/or with the approval of the Orchestra Director, with the understanding that there will be out-of-school performances and rehearsals required of all members during the school year. The course will cover the mechanics of string instruments: note reading, rhythm, pitch discrimination, expression, and music literacy at a higher level. Students receive one hour elective credit for all music courses

The Johns Creek High School "Philharmonia Orchestra" is a performance group comprised of 9th through 12th grade students. The students are selected through auditions and/or with the approval of the Orchestra Director, with the understanding that there will be out-of-school performances and rehearsals required of all members during the school year. The course will cover the mechanics of string instruments: note reading, rhythm, pitch discrimination, expression, and music literacy at a higher level. Students receive one hour elective credit for all music courses

The Johns Creek High School "Sinfonia Orchestra" is a performance group comprised of 9th through 12th grade students. The students are selected through auditions and/or with the approval of the Orchestra Director, with the understanding that there will be out-of-school performances and rehearsals required of all members during the school year. The course will cover the mechanics of string instruments: note reading, rhythm, pitch discrimination, expression, and music literacy at a higher level. Students receive one hour elective credit for all music courses.

Additional Ensembles:

Johns Creek High School Symphony Orchestra:

This is a full-orchestra that includes string students from Chamber; select students from Philharmonia, winds, and percussion. The wind and percussion students in this orchestra are a group of selected students from JCHS Band through auditions and/or recommendation from the Director. The Johns Creek High School Symphony Orchestra usually rehearses once a week in the evenings and sometimes during class.

Chamber Strings :

Chamber Strings is a selected ensemble that comprises members of the Johns Creek High School Orchestra that performs in special, smaller ensemble settings. The students are chosen based on their musical skills, dependability, and instrumentation. The members of the Chamber Strings will sometimes be asked to perform at functions with a short notice; therefore, the students must be flexible. Failure to communicate in a timely fashion with the Director can result in dismissal from this elite ensemble.

Other String Ensembles (String Quartet, etc...):

All students are encouraged to participate in small chamber ensembles, such as string quartets, quintets, trios, etc.... The students' musical understandings and appreciation about the composers and their work will be much enhanced through the performing of chamber music.

The students will benefit much both musically and socially by participating in small ensembles. The students will generally rehearse before and/or after school.

METHOD BOOKS/COURSE MATERIALS

Method Books

The students will be exposed to music of all genre and styles. In addition to many different types of music that they will perform in class, the students will also use supplemental books throughout the course of the year, depending on their ability and progress. Listed below are some of the supplemental books which will be used throughout this year:

Expressive Techniques for Orchestra

Advanced Techniques for Strings

Essential Elements for Strings

Harmonized Rhythms

Carl Flesch Scale System

Replacement of each book is about \$7.

Tuner and Metronome

All students are encouraged to purchase a personal tuner and metronome. These devices are necessary during personal practices at home to improve his/her performance.

“Daily Required Materials”

All students are required to bring their instrument, personal copy of music, and pencils to class. Failure to bring these items will result in lowering of the student’s grade.

CONCERT ATTIRE

All Johns Creek High School Orchestra students are required to provide their own performance uniform and dress shoes. The uniform needs to be properly fitted and worn properly. Any student not properly dressed will not be allowed to perform until the problem is corrected.

Males:

Tuxedo with black bow tie, white shirt, black cummerbund
Black socks and black shoes

Females:

Long black dress (to the ankle)
Black stockings with black shoes

GRADING SCALE and DISCIPLINE

The grading scale and quality point values for final semester grades are as follows:

<u>Letter Grade</u>	<u>Numerical Grade</u>
A	90 - above
B	80 - 89
C	70 - 79
F	Below 70
W	Withdrew (numerical grade is used for 1 to100)/Pass or Fail
NG	No grade (no transfer grade or on roll less than 20 school days in the grading period)
INC	Incomplete

*This course requires an end of the semester or year (enter appropriate one for your subject) EOC or SLO assessment (enter appropriate one for your subject). The State Board of Education and the Fulton County Board of Education have yet to determine the weight of the assessment. This information will be forthcoming.

Recovery Policy:

Please refer to Johns Creek High School Student Handbook regarding Recovery Policy.
(pg.15-16 in the student handbook)

Honor Code Against Academic Dishonesty: (pg 19-21 in the student handbook)

Integrity is a Johns Creek High School core value. All JCHS students are bound by the JCHS Honor Code.

ADVANCED ORCHESTRAS **(Chamber/Philharmonia/Sinfonia)**

An orchestra member's semester grade will be derived from rehearsal and performance attendance (35%), playing and/or written tests (20%), classroom participation (25%), final exam (15%), and Homework (5%).

Grading for Festival/LGPE preparation during the 2nd semester for the Advanced Orchestra classes involve individual check-offs on each of the selections. The students need to accurately perform 95% of each selection in order to participate in the Festival/LGPE--first chair/stand players at 100%.

Testing

Playing tests/quizzes and check-offs will be given regularly by the Director. A numerical grade will be assigned after each quiz/test. Written and Playing tests will be given throughout the semester.

Homework

The students' grade will be lowered when homework is turned in late—one letter grade lowered per/day. All students are responsible in learning music and completing all written/oral homework. All students will be responsible for numbering the measures in his/her music within 2 days of issuance. This is not to be done during class. The section leaders will check parts and report failures to the Concertmaster (mistress).

Attendance Policies for Performance and Rehearsal

Orchestra members shall regard performance as their primary purpose for belonging to this organization and shall make every possible effort to be in attendance unless there is an emergency situation.

Students are required to be present at all rehearsals and performances in order to receive full credit and remain in good standing with the Orchestra. Situations may arise for not attending an orchestra activity. Students should contact the Director with an acceptable reason prior to the activity (must be a written note- at least one day in advance) to avoid any grade penalty and to receive “alternative” assignment for makeup (*for excused absence only*). The student must turn in makeup assignment in a timely manner to receive credit. Unexcused absences will not be allowed to makeup work.

Examples of unexcused absences are:

- Homework/classroom project
- No transportation
- Dentist/Orthodontist appointment
- Attending a rock concert or sporting event
- Birthdays
- Work
- Trips/vacations

A personal illness and death in the family are considered emergency situations. In this case, a written explanation should follow (a doctor's note, if student is ill).

The Director reserves the right to excuse or not excuse each absence depending on the situation at hand.

An absence from a final rehearsal could result in a student not being allowed to perform with the orchestra for the upcoming performance(s). Unexcused absence from a public performance could result in dismissal from the Orchestra and/or lowering of grade (zero) and receiving demerits.

Dismissal

The Director reserves the right to remove a student from organization for:

- An unexcused absence from a performance
- Use of drug or alcoholic beverages while representing the Orchestra or Johns Creek High School
- Continued failure to demonstrate a cooperative behavior and attitude

Parents shall be notified immediately regarding the above circumstances for dismissal. Students dismissed from performing organizations shall continue to function in daily class until the end of the semester. He/she will have student/teacher “compromised” assignment during that time. A grade will be assigned based only on class work/assignment and participation.

Trip-related Information

The student may not be allowed to participate on orchestra trips if the student fails to adhere to any one of the following Johns Creek High School Orchestra rules and expectations. Some of these expectations include:

- a) Attend regular rehearsals and performances
- b) Learn his/her given music
- c) Respect teacher and fellow students
- d) Fulfill his/her financial obligations--including orchestra activity fees, trip fees, and trip fundraising (In order to participate in any orchestra trips, the student must first pay his/her orchestra activity fee in full).

CLASSROOM RULES AND PROCEDURES

Tardiness to Class/Rehearsal:

Students are expected to be in class before the bell rings. The students need to understand the nature of our class in which much preparation (such as tuning/warming up, getting music, instrument, etc.... prior to actual class instruction) needs to take place.

Tardiness will not be tolerated in this class. Parents are responsible of obtaining student attendance via Parent Connect. Tardiness can count toward the loss of school privileges as well as deduction towards student's classroom participation grade and merit points. The student may also be demoted to lower chair. Students must also serve private detentions or referral for Saturday School, ISS, or for more significant actions (*pg.15 in the student handbook*). Please Do Not Be Late to Class/Rehearsal!!!

Classroom Participation:

Students are expected to be attentive and respectful. There should be no talking except by the conductor. If students have any questions, they should raise their hand and wait to be called. They should address all major questions to the conductor instead of discussing things among themselves. For any minor problems (such as bowing, etc....), they should check it out with his/her section leader. When the conductor works with one section, an individual or any other situation not involving you personally, your focus of attention should still remain on the conductor because the concepts being taught may also directly or indirectly apply to you as well.

Food, drinks, gum, etc... are absolutely not allowed in rehearsal room and rehearsal areas (water bottle with cap is ok). Cell phones, iPads, or any type of mobile devices are also not allowed during rehearsals, unless directed by the Director. Failure to comply with these rules will result in lowering of classroom grade, privileges, demerits, and/or further disciplinary action.

INDIVIDUAL PROGRESS

Chair Assignment

Students will be assigned seating and parts in their section according to their demonstrated playing ability during auditions.

Section leaders and assigned parts will be determined following these auditions. Section leaders will assist other students in learning the assigned music. One of the responsibilities of the Concertmaster is to lead and represent the orchestra. The Concertmaster of the “Chamber” Orchestra is expected to participate in the JCHS Chamber Strings-related performances.

First stands in each ensemble shall make every effort to be at all rehearsals and be in their seats before each rehearsal begins. The first stands should be one of the first persons to learn the music. Failure to learn quickly, unable to lead his/her section will result in demoting to lower seating. Such change, however, will not necessarily lower student’s grade. All students are expected to progress through individual, daily practice

Seating Auditions for Chamber/Philharmonia/Sinfonia Orchestra (initial seating auditions ONLY)

Students will play two assigned scales and arpeggios of three octaves (two octaves for string bass), prepared excerpt given by the director, and sight reading music.

SINFONIA I & II	
VIOLIN -	G Major scale with arpeggio A Major scale with arpeggio
VIOLA -	C Major scale with arpeggio D Major scale with arpeggio
CELLO -	C Major scale with arpeggio D Major scale with arpeggio
STR. BASS -	F Major scale with arpeggio G Major scale with arpeggio

PHILHARMONIA/CHAMBER	
VIOLIN -	Bb Major scale with arpeggio A Melodic minor scale with arpeggio
VIOLA -	Eb Major scale with arpeggio D Melodic minor scale with arpeggio
CELLO -	Eb Major scale with arpeggio D Melodic minor scale with arpeggio
STR. BASS -	Ab Major scale with arpeggio G Melodic minor scale with arpeggio

Challenges

A student may challenge for a higher chair following a written request to the Director and informing the person being challenged. A challenge form will be used. Current music and sight-reading may be used for challenges during the school year. A prepared solo will be used for initial audition only.

Challenges involving a change in part will not be allowed three weeks prior to a scheduled performance, unless noted otherwise by the director.

Private Lessons

Private lessons are not required but are strongly encouraged. Individual progress can be enhanced through private tutoring.

Private Teacher List is found on the Johns Creek High School Orchestra website. The Director will be glad to assist interested students in contacting private teachers.

PRIVATE TEACHER LIST – ORCHESTRA

NAME	INSTRUMENT	PHONE	EMAIL
Daniel Arshavsky (Roswell)	Violin	770-993-5533	arshavskymusic@hotmail.com
Cindy Beard (Alpharetta)	Viola	770-740-8107	
Virginia Billips	Violin	770-396-3626	
Amy Chang	Viola	770-396-3626	
Noriko Clift	Violin	770-396-3626	
David Dillard	Violin/Viola	770-396-3626	
Sherry Ellis	Violin/Viola	470-299-6106	
Gabriel Feurdean	Violin/Viola	770-819-7847	
Ilya Fishov (Alpharetta)	Violin/Viola	404-585-0665	
Sonya Foster	Violin (advanced only)	770-399-7626	sallen2000@comcast.net
Keiko Furness (Cummings)	Violin/Viola	770-887-7160	
Jeanne Johnson-Watkins	Violin (Alpharetta)	770-410-4990	jeanne@jeannespheres.com
William Johnston	Viola	713-320-2964	william.l.johnston@gmail.com
Allison Jones	Viola	770-833-0793	allijones2006@yahoo.com
Nadir Kashimov	Violin	770-396-3626	-
Miriam KChari	Violin/Viola	678-795-0602	
Yong Lui	Violin/Viola	678-417-6489	
William Pu (Alpharetta/Johns Creek)	Violin	404-518-8891	wpmusicacademy@gmail.com
Ronda Respass	Violin	404-252-3479	rondarespass@comcast.net
Domenic Salerno (Emory Univ)	Violin	610-360-4709	rs39@case.edu
Yuri Segawa	Violin	770-396-3626	
Lee Sheehan	Violin	770-396-3626	
Mimi Tam	Violin	678-200-8956	mimitam615@gmail.com
Le Zheng	Violin/Viola	770-465-0704	
Jennifer Barket (Alpharetta)			
Jennifer Barket (Alpharetta)	Cello	678-366-9759	
Mary Beth Bryant	Cello	770-713-1255	Marybhussey@yahoo.com
Joel Dallow	Cello	770-355-2556	jadallow@comcast.net
Erin Ellis	Cello	216-798-3675	erincello@gmail.com
Shalunda Feurdean	Cello	770-819-7847	
Martin Gueorguiev	Cello	770-396-3626	
Joshua KChari	Cello	678-795-0602	kcharijoshua@gmail.com
Dona Klein	Cello	770-396-3626	
Maurice Bell	String Bass	212-203-7948	
Todd Markey	String Bass	678-297-0911	
Brian Rehm	String Bass	770-396-3626	
You can also find reputable instructors from music schools listed below:			
Georgia Academy of Music (Buckhead)		404-355-3451	www.gaom.us/
Huthmaker Bowed String Instrument (Duluth)		770-476-9443	www.huthmakerviolins.com/
Music DoReMi		770-729-9882	www.music-doremi.com/
North Atlanta Talent Education (Roswell)		770-640-1003	www.natesuzuki.com/
William Pu Music Academy (Alpharetta/Johns Creek)		770-396-3626	wpmusicacademy@gmail.com

FACILITY AND EQUIPMENT

Director's Office

Students shall enter the Director's office only for official business. This area is off limits to students except those engaged in work or meeting (Orchestra Leadership team). Please do feel free to come in to the office to seek help/advice or discussions. Students are requested not to interrupt during conferences.

Rehearsal Rooms (Orchestra Room/Orchestra Ensemble Room/Auditorium/Band Room)

Each orchestra member shall assume the responsibility of picking his/her music, instrument, books, clothing, etc. and storing such items properly at the end of each rehearsal or performance. Any music and/or items left in rehearsal room and rehearsal areas may result in a lowering of student classroom grade and/or demerit points.

No personal items should be left in the rehearsal rooms. The school will not be responsible for any personal items left in the classroom. All equipment, including instruments, must be stored properly on shelves, lockers, and racks. Chairs, stands, equipment must not be removed without permission.

Only orchestra/music students are allowed in the orchestra room.

Computer/TV/Technology Usage

Johns Creek High School supports the use of technology for academic pursuits. However, all technology must be turned off and put away upon entering classroom. Computers, TV, printer, and Music Players in the orchestra room can be used only by orchestra students and only with permission. Students are not to use them without Mr. Kim's permission. When using the computers, you must logout completely upon finishing your task.

Instrument Storage

All instruments must be properly stored in assigned lockers/bins at all times when not in use. Instrument that is too large for shelving will be assigned in specified storage area.

Storage bins/lockers are to be kept clean and free of litter and personal items. Students are expected to take their instrument home daily. Therefore, every storage bin should be empty of personal items, including instruments at the end of school day.

Library

The librarians/helpers will assist students with all music needs. Students other than the librarians/helpers are not allowed to remove music or return music to library filing cabinets. Copier in the library/practice room is off limit to students. Only the authorized librarians should be allowed to use it.

Lost Music Fines

Each orchestra member shall be issued with music. Students not receiving issued parts shall immediately inform a Librarian in order to obtain it. All students need to have their own parts at **ALL** rehearsals (**NOT JUST YOUR STAND PARTNER**).

2015-2016 GMEA ALL-STATE ORCHESTRA INFORMATION

District All-State Auditions

Students who are auditioning for an All-State Orchestra must play the following:
Etude, Scales, and Sight Reading.

- Detache scale and arpeggio: 15 points (30 points for M. S. only)
- Slurred scale and arpeggio: 15 points (9-10 H. S. and 11-12 H. S. only)
- Etude: 30 points (*see below info regarding Etude*)
- Sight-reading: 20 points

Total 80 points (**55 points needed to pass the 1st round**)

ALL SCALES MUST BE PLAYED FROM MEMORY

Scales and Arpeggios for 9-10 High School:

Student will be asked to play the following scales, separate bows or slurred two notes per bow, and arpeggios with separate bows (QN = 60 or EN = 120 on slurred scales):

VIOLIN G and A major, 3 octaves
g and a melodic minor, 3 octaves

VIOLA C and D major, 3 octaves
c and d melodic minor, 3 octaves

CELLO C and D major, 3 octaves
c and d melodic minor, 3 octaves

BASS F and G major, 2 octaves
f and g melodic minor, 2 octaves

Scales and arpeggios for 11-12 High School:

Student will be asked to play the following scales, separate bows or slurred two notes per bow, and arpeggios with separate bows (QN = 60 or EN = 120 on slurred scales):

VIOLIN - Bb and C major, 3 octaves
g and a melodic minor, 3 octaves

VIOLA - Eb and F major, 3 octaves
c and d melodic minor, 3 octaves

CELLO - Eb and F major, 3 octaves
c and d melodic minor, 3 octaves

BASS - Ab and Bb major, 2 octaves
f and g melodic minor, 2 octaves

Sight-reading:

There will be only one sight-reading selection at District Audition. This selection will be of a Lyrical/Technical nature.

ETUDE - District All-State Orchestra Audition – 2015-2016
(1st Round only)

9/10 Orchestra

VIOLIN

Mazas: Etudes Speciales, Galamian ed., International Music Co., Op. 36, Book 1, #15. QN=76

VIOLA

Mazas: Etudes Speciales, Pagels ed., International Music Co., Op. 36, Book 1, #15. QN=76

CELLO

Schroeder: 170 Foundation Studies, Carl Fischer, Volume 1, #76 QN=108

DOUBLE BASS

Rabbath: A New Technique, Alphonse Leduc, Book 1, #6 (D major), QN=76

11/12 Orchestra

VIOLIN

Mazas: Etudes Speciales, Galamian ed., International Music Co., Op. 36, Book 1, #23. EN = 132

VIOLA

Mazas: Etudes Speciales, Pagels ed., International Music Co., Op. 36, Book 1, #23. EN=132
(correction: change rhythm on pg.1 mm.12 should be sixteenth notes)

CELLO

Schroeder: 170 Foundation Studies, Carl Fischer, Volume 1, #73. QN=92, 8 notes per bow

DOUBLE BASS

Simandl: 30 Etudes, Carl Fischer, #25. QN=120



- For complete All-State information, please visit:
<http://www.gmea.org/orchestra/all-state-orchestra/>

MISCELLANEOUS

Stadium Concession Stands

Each student is expected to volunteer for at least two shifts a year. Parents may act as substitutes for their student's shifts. This is necessary since the Johns Creek High School Orchestra receives a portion of the profits made from the concession stands. This in return can help lower the orchestra activity fee and help to pay for the Orchestra Operation budget. Information regarding concession stands can be obtained from the Orchestra Booster Board.

Instrumental Music and Athletics

Music students are encouraged to participate in any sport they choose provided rehearsals of the music group can be attended. The Director and Coach will try to work out a compromising schedule for the student. It is the student's responsibility to first inform the Director and Coach of the situation.

Scheduling of Classes

Orchestra members who are confronted with scheduling problems should consult the Director for assistance.

Students who have earned first chair status in their respective primary ensemble sections must be enrolled in the regular scheduled class. Students need to be enrolled in the regular scheduled class to participate in performances. Exceptions are upper classmen who have unresolved schedule conflicts involving classes necessary for graduation and/or AP class conflict or Joint-Enrollment conflict in which the Director has approved for participation.

Parent Conferences

Parent conferences are encouraged as needed. Please feel free to contact the Director for an appointment.

JCHS Orchestra Office: (770) 623-2138 ext. 183

Email: ykkimy@gmail.com

JCHS Teacher-IO: <http://www.teachers.io/schools/ga-johns-creek-hs>

Johns Creek High School Orchestra Website

<http://www.johnscreekorchestra.com>

- Much of the orchestra-related-information will be available on our orchestra website.

MERIT SYSTEM

Merits are points given to students for extra work or outstanding achievement worthy of recognition. Students accumulate merits to qualify for awards given at the annual Spring Orchestra Banquet. Merits do not affect a student's semester grade.

Demerit points will be given to students not following rules of orchestra, such as missed rehearsals, chewing gum in class/rehearsal, leaving music/items on the stand, negative behaviors, etc....

MERIT ACCUMULATION

2015-2016

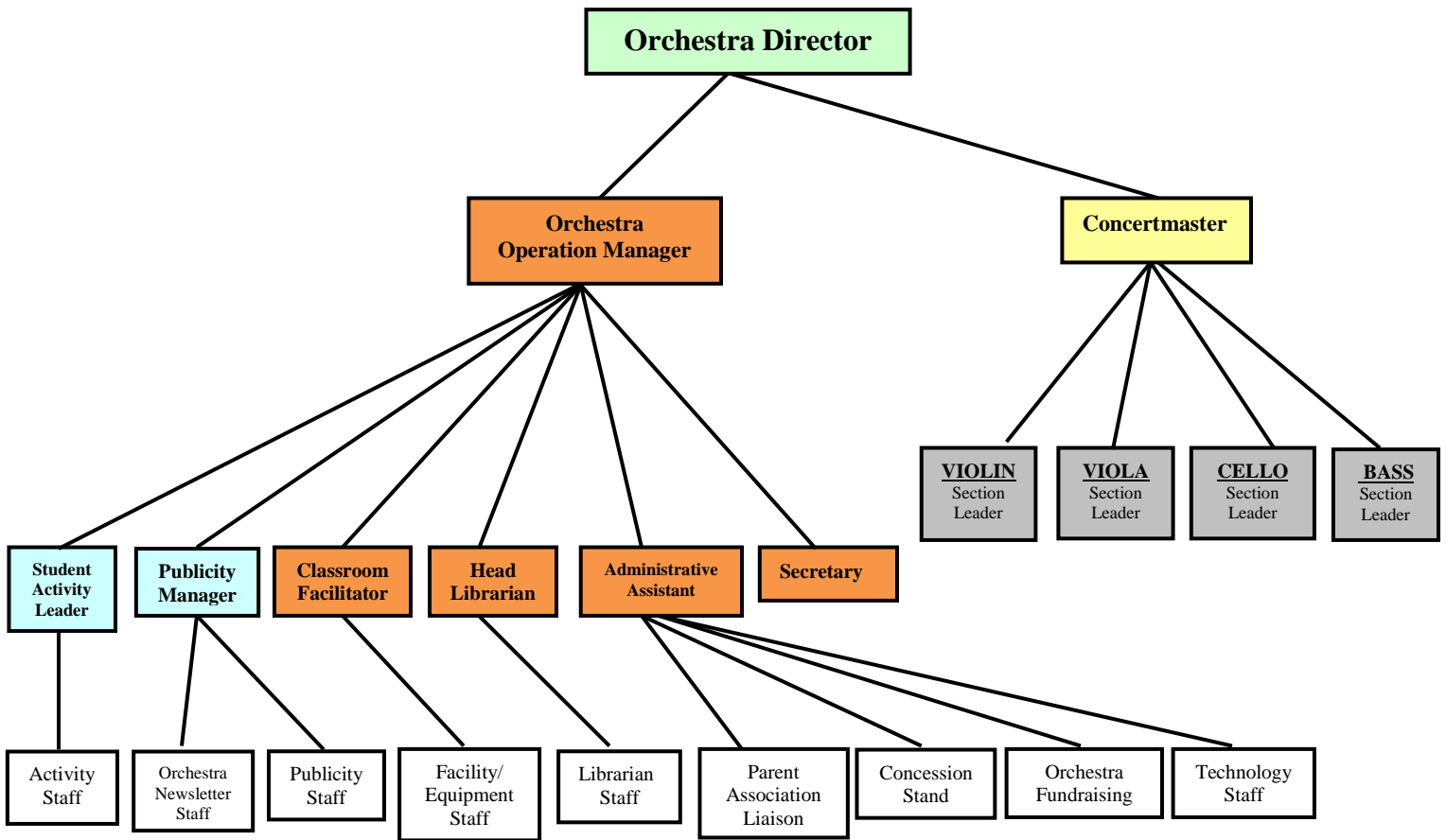
Orchestra Letter/Bar - 15-40 merits
Star - 41+ merits

- _____ Orchestra Officer/Volunteer (6 pts)
- _____ Extra effort in helping with orchestral needs (4 pts)
- _____ Have Met Section Leader Responsibilities (3 pts per Semester)
- _____ “Excellent” Ratings at the Solo & Ensemble Festival
SOLO-(4 pts) ENSEMBLE (3 pt each)
- _____ “Superior” Ratings at the Solo & Ensemble Festival
SOLO-(5 pts) ENSEMBLE (3 pt)
- _____ Participation in High School All-State/Statewide Orchestra Auditions
Auditions DIST. (6 pts) STATE (additional 8 pts)
- _____ High School All-State/Statewide Orchestra Member (12 pts)
First Chair at All-State/Statewide (add. 15 pts)
- _____ Fulton County High School Honor Orchestra
Auditions (5 pts) *Honor Orchestra Member* (additional 12 pts)
- _____ Governor’s Honors Participant in Music (10 pts)
- _____ Major Fund Raising Sales (5 pt) Highest (additional -10 pts)
2nd, 3rd, 4th (additional -7 pts)
- _____ Private Lessons on Major Orchestra Instrument (2 pts per month)
- _____ GMEA Large Group Performance Evaluation Participation (5 pts)
- _____ Regular Membership in Performing Organization Other than JCHS
- Requiring Weekly Rehearsals—ASYO, MYSO, etc...(1 pt. Per month)
- _____ JCHS Chamber Strings (2pt – 8pt)
- _____ JCHS “Notes of Joy” Ensemble (2pt – 10pt)
- _____ Stadium Concession Stand (1 pt each – max. up to 5 pts)

OTHERS: List anything below that you consider to be worthy of consideration for merits not listed above. Points will be assigned if there is good reason.

_____	_____
_____	_____
_____	_____
_____	_____

Johns Creek High School Orchestra Leadership Team 2015-2016



Management Team

Operation Manager (s) – George Pan and Vivian Cheng
 Administrative Assistant (s) – Carson Baker and Julia Rowberry
 Secretary – Anamica Menon
 Classroom Facilitator (s) – Lauren Ha, Viha Desai, TBD
 Head Librarian – Annie Su
 Chief Student Activity Leader – Morgan Ogryzek

Officers and Volunteer Staff

Publicity Manager – Sarah Suh
 Staff – Elizabeth Hislop and Kennedy Kelly
 Student Activity Leader – Ashmita Totada and Angela Marteniuc
 Facility/Equipment Manager – Jason Chen
 Staff – Daniel Kim, Kevin Feng, Ethan Wang, Drew Li
 Librarians – Aida Rassam, Caroline Bienkowski, Jasmine Muhawar,
 Lillie Zhou, Rehna Sheth

Johns Creek High School Orchestra Leadership Team and Volunteer Members Duties/Responsibilities

Operation Manager:

- Communicate between Mr. Kim, Leadership Team, and Parent Boosters
- Coordinate orchestra activities (sectionals, student activities, etc...)
- Lead Leadership Team meetings and help set future goals
- Make classroom announcements
- Assist Mr. Kim with taking class and after school attendance
- Provide assistance to Mr. Kim when needed

Administrative Assistant(s):

- Help schedule concession stands
- Coordinate Orchestra Fundraisers
- Communicate with Orchestra Parent Boosters
- Coordinate events with Publicity Manager
- Communication (via Email, Student Facebook, etc...)
- Manage Orchestra Student Facebook account
- Coordinate Technology-related Instructions (website, video/audio activities, etc..)

Secretary

- Keep minutes of all leadership meetings
- Communicate with all members of orchestra regarding functions and activities

Librarian (Head):

- Organize/Coordinate sorting music (Sinfonia, Philharmonia, Chamber, Symphony, chamber music, etc...)
- Distribute/collect music for rehearsals/concerts
- Organize library/practice room
- Set procedure for cataloguing/organizing music

Classroom Facilitator:

- Assist Mr. Kim in taking daily attendance
- Make daily announcements
- Facilitate classroom management
- Maintain clean orchestra room, practice room, and instrument storage rooms
- Organize Orchestra Room for class/rehearsals/concerts
- Setup and break down stage for rehearsals/concerts
- Collect equipment (tuners, rock stops, etc...) after rehearsals/concerts
- Organize/store equipment (keyboard, amps, music stands, etc....)

Chief Student Activity Leader:

- Organize monthly student activities
- Help plan for Potluck Dinner and Banquet activities (i.e. paper plate awards)
- Take pictures and record orchestral activities
- Manage archives of orchestra pictures
- Plan logistics with Equipment/Facility Manager
- Help design orchestra t-shirts

Publicity/Newspaper Manager:

- Inform Johns Creek Community regarding concerts and special events
- Manage and operate quarterly Orchestra Newsletter
- Coordinate events with the Orchestra Administrative Assistant
- Take pictures and record orchestral activities

Johns Creek High School Orchestra Student Leadership and Volunteer Team 2015-2016

Management Team

Operation Manager (s) – George Pan & Vivian Cheng
Administrative Assistant (s) – Carson Baker & Julia Rowberry
Secretary – Anamica Menon
Classroom Facilitator (s) – Lauren Ha, Viha Desai, TBD
Chief Activity Leader – Morgan Ogryzek
Publicity/Newspaper Manager – Rachel Suh
Head Librarian – Annie Su

Officers and Volunteer Staff

Publicity/Newspaper Staff – Elizabeth Hislop & Kennedy Kelly
Facility/Equipment Staff – Jason Chen (Manager)
Staff – Daniel Kim, Kevin Feng, Ethan Wang, Drew Li
Student Activity Leader (s) – Ashmita Totada & Angela Marteniuc
Librarians – Rehna Sheth, Jasmine Mujawar, Aida Rassam,
Caroline Bienkowski, Lillie Zhou

Johns Creek High School Orchestra Boosters Association

Karen Anderson, President
Janet Lundy, Vice President
Renee Kelly, Secretary
Julie Hislop, Treasurer

Johns Creek High School Administration

Dr. Jimmy Zoll, Principal
Carlton Harris, Assistant Principal
Caren Hudson, Assistant Principal
Patrick Martin, Assistant Principal



IMPORTANT:

You must visit Johns Creek High School Orchestra website (www.johnscreekorchestra.com) and download the required form, sign it and return it with your child.